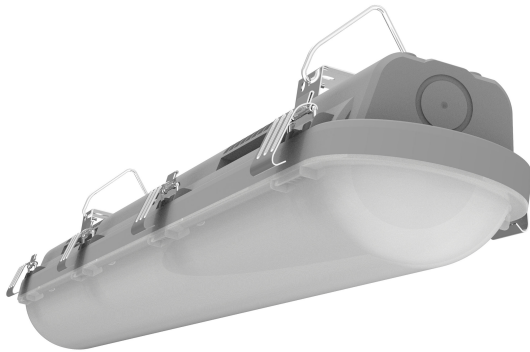


PRODUCT DATASHEET

LED PERFORMANCE DP 600 8W 840

Standard ON-OFF version | Damp-proof luminaires



Areas of application

- Industrial and storage facilities
- Car parks and underpasses
- Garages
- Workshops, assembly lines
- Warehouses, logistic halls
- Humid and dirty application areas

Product benefits

- UV-stabilized polycarbonate opal diffuser for uniform light distribution and long durability
- Polycarbonate body and diffuser offers IK08 impact protection
- Sleek and lightweight slim body design, compact but powerful
- Long 50,000 hours lifetime reduces maintenance costs

Product features

- Available in 7 wattages and lumen packages
- Available in 3 length options, ensuring direct replacement of traditional 2-4-5 feet fluorescent dampproof fixtures
- High system lumen efficacy: up to 150 lm/W
- Color rendering index R_a : > 80
- Four versions: standard on-off, wide voltage on-off, Tri-CCT and DALI DIM
- Anti-corrosion stainless steel clips
- Type of protection: IP66
- Impact resistance: IK08
- Certificate: CB, EMC, RoHS
- Class I Luminaires

TECHNICAL DATA

Electrical data

Nominal wattage	8.00 W
Nominal voltage	220...240 V
Mains frequency	50...60 Hz
Protection class	I

Photometrical data

Luminous flux	1200 lm
Luminous efficacy	150 lm/W
Color temperature	4000 K
Color rendering index Ra	> 80
Beam angle	120 °

Dimensions & Weight

Length	599.00 mm
Width	77.00 mm
Height	68.00 mm
Product weight	730.00 g



LDPFM DP 600 G4

Materials & Colors

Body material	Plastic
---------------	---------


Application & Mounting


Type of protection	IP66
Dimmable	No
Mounting type	Surface
Replaceable light source	No

Certificates & Standards

Replaceable light source (EPREL)	Not replaceable
----------------------------------	-----------------

DOWNLOAD DATA

Documents and certificates		Document name
	User instruction / safety instructions	LDPFM DP 600_1200_1500_G4 UI

Photometric and lighting design files		Document name
	IES file (IES)	LDPFM DP 600 8W 840 G4 LEDV

LOGISTICAL DATA

Product code	Packaging unit (Pieces/Unit)	Dimensions (length x width x height)	Gross weight	Volume
4099854138027	Folding box 1	72 mm x 82 mm x 605 mm	748.00 g	3.57 dm ³
4099854138034	Shipping box 10	621 mm x 181 mm x 395 mm	7978.00 g	44.40 dm ³

The mentioned product code describes the smallest quantity unit which can be ordered. One shipping unit can contain one or more single products. When placing an order, for the quantity please enter single or multiples of a shipping unit.

DISCLAIMER

Subject to change without notice. Errors and omission excepted. Always make sure to use the most recent release.