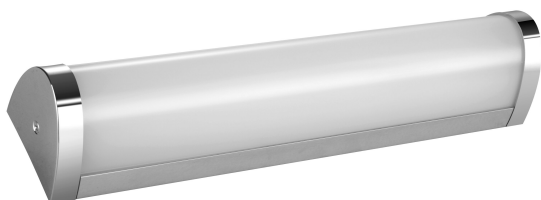


PRODUCT DATASHEET

LED VALUE MIRROR LIGHT 16.00 W/3000 K 604.00 mm

LED VALUE MIRROR LIGHT | Linear luminaires



Areas of application

- Bathrooms
- Powder room
- Mirror cabinets

Product benefits

- Photobiological safety according to IEC TR62778, risk group RG0
- 3 years guarantee

Product features

- Protection class: II
- Mercury-free and RoHS compliant
- Type of protection: IP44
- Available with color temperature: 3,000 K, 4,000 K, 6,500 K
- Lifetime (L70/B50) up to 50,000 h (at 25 °C)
- Color consistency: SDCM 6
- Color rendering index R_a : > 80
- Beam angle: 100°
- Surge voltage capability: 500 V



TECHNICAL DATA

Electrical data

Nominal wattage	16.00 W
Nominal voltage	220...240 V
Mains frequency	50...60 Hz
Power factor λ	0.55
Protection class	II
Operating mode	Integrated LED driver

Photometrical data

Luminous flux	1400 lm
Luminous efficacy	85 lm/W
Color temperature	3000 K
Light color (designation)	Warm White
Color rendering index Ra	80
Standard deviation of color matching	< 6 sdcm
Beam angle	120 °

Dimensions & Weight

Length	604.00 mm
Width	75.00 mm
Height	66.00 mm
Product weight	589.00 g

LDVAL MIRRLIGHT 16W 350 IP44

Materials & Colors

Product color	Silver
Housing color	Silver
Body material	Aluminum
Cover material	Polycarbonate (PC)
Mercury content	0.0 mg


Application & Mounting

Ambient temperature range	-20...+40 °C
Type of connection	Terminal block
Type of protection	IP44
Protection class IK (shock resistance)	IK03
Dimmable	No
Mounting type	Surface
Mounting location	Ceiling / Wall
Application environment	Indoor
Replaceable light source	No

Certificates & Standards

Standards	CB / RoHS
Replaceable light source (EPREL)	Not replaceable

DOWNLOAD DATA

Photometric and lighting design files		Document name
	IES file (IES)	AC289740055 LDVAL MIRRLIGHT16W350 830IP44

LOGISTICAL DATA

Product code	Packaging unit (Pieces/Unit)	Dimensions (length x width x height)	Gross weight	Volume
4058075540408	Folding box 1	617 mm x 82 mm x 71 mm	688.00 g	3.59 dm ³
4058075540415	Shipping box 12	632 mm x 347 mm x 237 mm	9056.00 g	51.98 dm ³

The mentioned product code describes the smallest quantity unit which can be ordered. One shipping unit can contain one or more single products. When placing an order, for the quantity please enter single or multiples of a shipping unit.

DISCLAIMER

Subject to change without notice. Errors and omission excepted. Always make sure to use the most recent release.